

Super-Snap **X-TREME** FINISHING & POLISHING & Super-Snap



Superior finishing and polishing disks

Super-Snap X-Treme

Advanced 3D technology

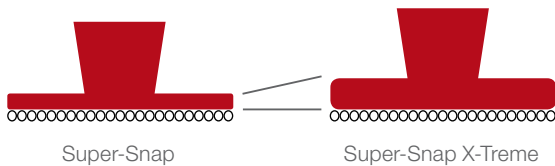
The Super-Snap X-Treme disks – an enhancement of the original green and red Super-Snap disks – feature a longer service life and an increased stiffness, while maintaining their well-known flexibility in interproximal areas.



Polishing with Super-Snap X-Treme standard disk



Superpolishing with Super-Snap X-Treme mini disk



The double-sided coated Super-Snap X-Treme disks, available in mini and standard size, are thicker than the Super-Snap disks and allow an enhanced contact pressure during polishing.

The added thickness creates a greater tactile feel and produces higher gloss results.

- Enhancement to the original green and red Super-Snap disks
- Extra thick to increase stability, tactile feel and durability while also maintaining flexibility in interproximal areas
- 3D coating helps to avoid surface clogging
- Simplified 2-step polishing procedure
- Achieves high gloss levels with smooth surfaces
- Double-sided coating with alumina
- 2 sizes: standard (12 mm) and mini (8 mm)

Super-Snap X-Treme surface grit, magnification x400



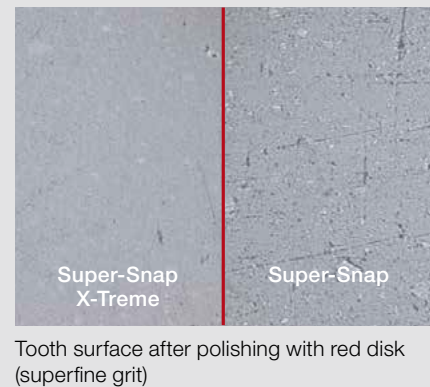
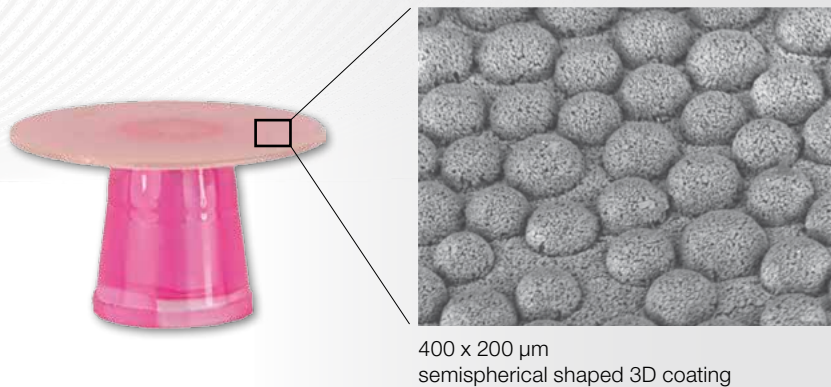
Green disk - fine
Polishing



Red disk - superfine
Superpolishing



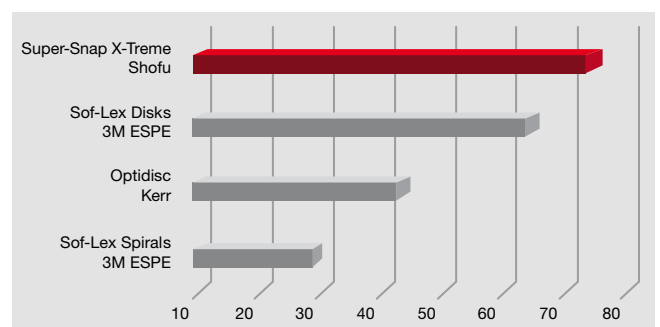
Super-Snap X-Treme's red 3D alumina grits allow space for ground debris to be discharged during polishing. This helps to prevent secondary scratches, clogging and reduces generated heat without any denaturing of the material.



Achieve a high-gloss polish – avoid surface clogging

The red Super-Snap X-Treme disks are exceptional as they feature a 3D coating of alumina particles, designed to ensure that the surface will not clog and polishing dust will not cause any secondary scratches.

Gloss level (Gs)



Source: R&D, SHOFU INC. All trademarks belong to their manufacturers.

Super-Snap

Step-by-step to the best composite restorations

Super-Snap, the 4-step disk system, is designed for easy, fast and safe contouring, finishing and polishing of all microfilled and nano-hybrid composites.

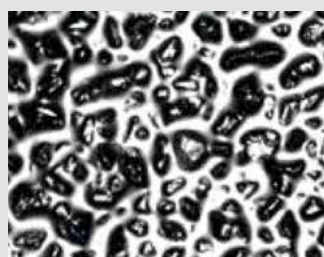
The disks are coated with silicon carbide or alumina and are manufactured without a metal centre, thus avoiding gouging and discolouration of the composite or enamel. They are available with the safe side down, safe side up and double-sided coated and come in standard (Ø 12 mm) and mini (Ø 8 mm) size.

- Colour coded by grit size: coarse (black), medium (violet), fine (green) and superfine (red)
- Highly flexible; ideal for interproximal use
- No metal centre – eliminates risk of gouging
- Elastic silicone shank mount for easy placement on the mandrel

Super-Snap surface grit, magnification x400



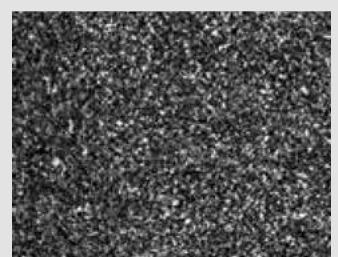
Black disk - coarse
Contouring



Violet disk - medium
Finishing



Green disk - fine
Polishing



Red disk - superfine
Superpolishing

Order information

Super-Snap X-Treme

	Polishing		Superpolishing	
Super-Snap X-Treme				
50 pcs. / box	L511	L531	L512	L532
Colour / grit	Green / fine		Red / superfine	



Super-Snap X-Treme Technique Kit

80 pcs. each Super-Snap / Super-Snap X-Treme
40 polystrips
2 Dura-White stones (CN1/FL2)
2 CompoSite / Fine midpoint
4 CA mandrels, steel
PN 0508



Super-Snap X-Treme

Standard Disk Kit

50 pcs. each red and green standard disks
PN 0506

Mini-Disk Kit

50 pcs. each red and green mini disks
PN 0507

Super-Snap

	Contouring		Finishing				Polishing		Superpolishing	
Super-Snap										
50 pcs. / box	L506	L507	L508	L509	L528	L522	L501	L519	L502	L521
Colour / grit	Black / coarse		Violet / medium				Green / fine		Red / superfine	



Super-Snap Rainbow Technique Kit

100 standard disks, 80 mini disks
40 polystrips
2 Dura-White stones (CN1 and FL2)
1 CompoSite Fine midpoint
4 CA mandrels, steel
PN 0500

Super-Snap Mini-Kit

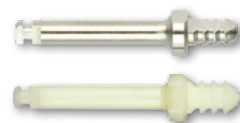
32 standard disks, 16 mini disks
1 CompoSite Fine midpoint
1 CA mandrel, steel
PN 0505

Super-Snap Polystrips

100 polystrips black (coarse) and violet (medium)
PN L525
100 polystrips green (fine) and red (superfine)
PN L526

Mandrels

6 CA mandrels, steel
PN 0439
100 CA mandrels, resin
PN 0440



SHOFU INC. 11 Kamitakamatsu-cho, Fukuine, Higashiyama-ku, Kyoto 605-0983, Japan
SHOFU DENTAL GmbH Am Brühl 17, 40878 Ratingen, Germany, www.shofu.de

SHOFU is a registered trademark of SHOFU INC. All other trademarks and registered trademarks are the property of their respective holders. SHOFU INC. reserves the right to change specifications without notice.